

## CAPTTEST -101

Bottle Cap Torque Tester



Easy CAL



RS-232 port

The **Pharmag Instruments Bottle Cap Torque Tester** comes with High Accuracy and High Resolution. It can be used to measure the torque value. It is easy to operate. The force gauge can display the Torque direction. It has the blue background light. The tester can set the Upper and Lower Limit Deviation value to judge the measured results. It has the red/green indicator Lamp and buzzer, which can alarm automatically with sound and Light.

The Bottle Cap Torque Tester can store 10 test values and calculate the average of the stored test value automatically. It can convert three Units [N, Kgf, lbf] automatically. Peak-Hold function, Peak Automatic Discharge function and Discharge time can be set freely. It can turn off automatically without any operation and the shutdown time can be set freely. RS-232 output data can be transferred into computer, printer and other outer equipments.

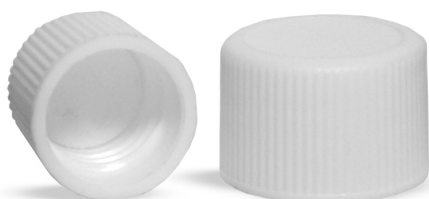
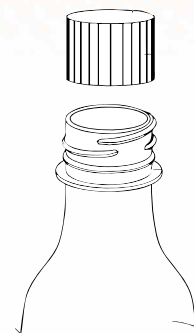
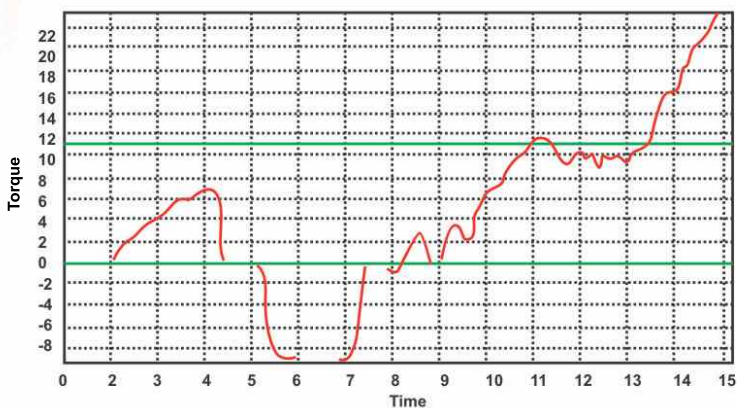
- **Compatibility:** High Resolution, High Accuracy and Easy to operate.
- **Real time Data Transfer :** It can give the real time test results through RS-232 to PC. It can plot the test results in real time graph through corresponding software.
- **Unit selection & Conversion:** Convert three Units [N, Kgf, lbf] automatically.
- **Parameter Measurements:** The Bottle Cap Torque tester measures the Torque value.
- **Sequence Indicators:** The Bottle Cap Torque Tester can set the Upper and Lower limit Deviation value to judge the measured results. It has the red/green indicator Lamp and buzzer which can alarm automatically with sound and light.
- **Display:** Blue Back Light display.
- **Results Storage:** The Bottle Cap Torque Tester can store 10 test value and calculate the average of the stored test value automatically.

**SPECIFICATIONS**

|                               |   |
|-------------------------------|---|
| Display                       | Blue back light display                                     |
| Torque range                  | 2-20N   |
| Hardness Accuracy             | ±0.5% FS  |
| Measurable Units              | N(Newton), KGF ( Kilogram Force) and Lbf ( Low bound Force) |
| Key Board                     | User Friendly 9 Key operation                               |
| Interface Ports               | RS-232  |
| Measurement object Diameter   | 15-200mm  |
| Electrical Power Adapter      | 230V, 50 Hz   |
| Stored Method                 | Upto 10 [also calculate the average value of test Results]  |
| Resolution                    | 0.01N   |
| Auto Unit Conversion          | Yes   |
| Zero point adjustment         | Yes   |
| Programmable T1, T2 tolerance | Yes   |
| Torque Direction              | Yes   |

\* Specification are subject to change without prior notice

**REAL TIME DATA TRANSFER**



**Represented By :**



**Manufacturing - Head Office :**  
 B-60, Asokar Street, A Colony, Jothi Nagar, Pollachi - 642 001, Coimbatore District, Tamil Nadu, India.  
 Cell No: +91-94420 00654, 9442000658, Email : sales@pharmaginst.com, www.pharmaginst.com

**Application Support Center & RO :**  
 Plot No.139, Jyothi Colony,  
 Lane Opp. Ganshyam Super Market,  
 AOC Centre, Secunderabad -500 026 India

**International Sales Office:**  
 Mr. Alex Guillen, ECCS , SA., Via Gordemo 28,  
 6596 Gordola, Switzerland,  
 Cell No: + 41 76 3754732, Fax No: + 41 91 7450708  
 Email : info\_europe@pharmaginst.com